



# Brunschwig & Fils

*Cape Comorin Collection*









Mugal Panel • Indigo  
8016102-50



Mugal Panel • Spa/Beige  
8016102-13



Mugal Panel • Madder/Blue  
8016102-19





Aramam Print • Flint/Rye  
8015175-116



Aramam Print • Flame/Cadet  
8015175-195



Aramam Print • Teal/Green  
8015175-133



Aramam Print • Indigo/Blue  
8015175-515

PRINTS



Komal Paisley • Indigo  
8016101-50  
Also available in Madder/Blue (19), Spa/Beige (13)

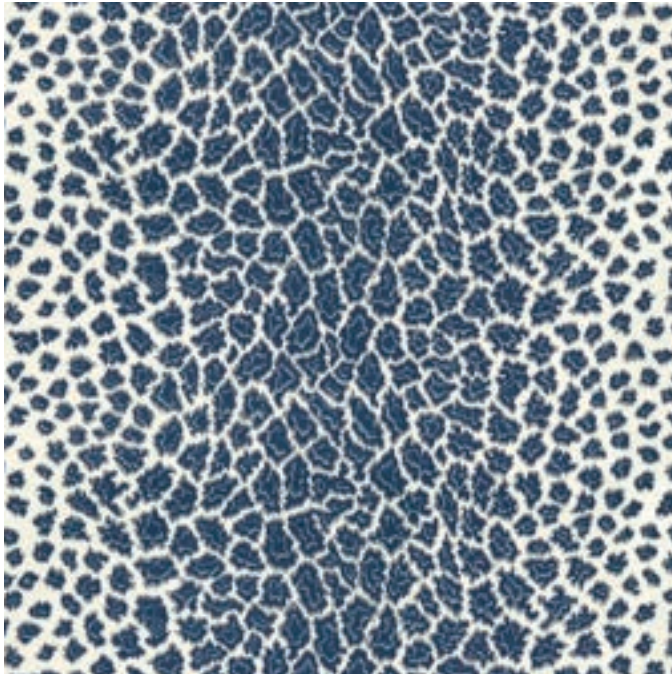


Mugal Panel • Indigo  
8016102-50  
Also available in Madder/Blue (19), Spa/Beige (13)



Onam Paisley • Indigo  
8016100-50  
Also available in Madder/Blue (19), Spa/Beige (13)





English Leopard • Sapphire  
8015170-50  
Also available in Nougat (114), Scarlet (19), Delft (15),  
Verdure (3), Cocoa (68)

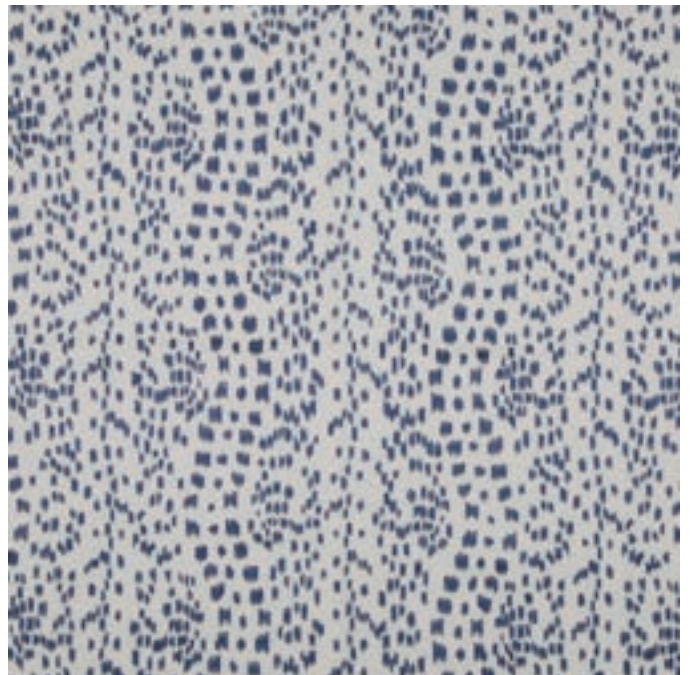


Aralam Print • Indigo/Blue  
8015175-515  
Also available in Flame/Cadet (195), Flint/Rye (116), Teal/Green (133)

#### WOVENS AND EMBROIDERIES



Varkala Print • Navy/Sky  
8015178-515  
Also available in Teal/Green (133), Pink/Green (723), Red/Blue (195)



Les Touches Embroidery • Indigo  
8015168-50  
Also available in Poppy (19), Leaf (3), Jade (35), Teal (53), Espresso (68),  
Stone (11), Canton Blue (221)

WOVENS AND EMBROIDERIES



Covelong Embroidery • Blue/Red/Sea  
8015171-593  
Also available in Red/Blue/Ore (954), Sea/Aqua,Tea (356)



Talakona Stripe • Blue/Gold  
8015174-54  
Also available in Clay/Red (697), Red/Blue (954), Spice/Teal (953)



Palar Texture • Sapphire  
8015177-50  
Also available in Pearl (101), Sand (16), Praline (6),  
Tomato (19), Jade (135), Ivy (3), Marble Grey (11), Leaf (33)



Le Zebre Embroidery • Navy  
8015172-50  
Also available in Pumpkin (12), Poppy (19), Leaf (3), Chickory (68)



Kaliveli Woven • Navy  
8015173-50

Also available in Ginger (24), Coffee (68), Pumice (11)



Savonnerie Velvet • Capri  
BR-89305-545

Also available in Earth (648), Jewel (953), Fresco (745)



Sarada Texture • Blue/Tan  
8015176-524

Also available in Iris/Azure (754), Stone/Fog (816)

“Good design is forever.”

- *Zelina Brunshwig*  
Zelina Brunshwig, 1942





Drapery: Coringa Embroidery in Aubergine 8015169-610; Furniture: Bellechasse Chair BR-2544. Chair in Sarada Texture in Iris/Azure 8015176-754; Pillows: (Left to Right) Savonnerie Velvet in Jewel BR-89305-953, Trim: Brosse De Laine in Plum T8015508-109; Le Zebre Embroidery in Pumpkin 8015172-12, Trim: Brosse De Laine in Orange T8015508-12



Drapery: Mugal Panel in Indigo 8016102-50; Raspail Chair BR-A8070. Chair in (Inside Fabric) Komal Paisley in Indigo 8016101-50, (Outside Fabric) Palar Texture in Sapphire 8015177-50; Pillow: Onam Paisley in Indigo 8016100-50, Trim: Soie Cord Petite in Sapphire T8012525-55; Carpet: Studio Key in Timber Dust



Drapery: Coringa Embroidery in Aubergine 8015169-610; Furniture: Rivoli Sofa BR-A9110. Sofa in Talakona Stripe in Spice/Teal 8015174-953; Pillow: Palar Texture in Ivy 8015177-3, Trim: Brosse De Laine in Emerald T8015508-5; Rug: R0000015 in Black Courtesies of JD Staron



Furniture: Hugo Chair Kick Pleat Skirt BR-2538KS. Chair in Aralam Print in Flame/Cadet 8015175-195; Pillows: (Back to Front) Les Touches Embroidery in Poppy 8015168-19, Trim: Coeur Cable-S in Rouge T8012104-9; Varkala Print in Red/Blue 8015178-195, Trim: Soie Moss in Classique T8012524-519; Covelong Embroidery in Blue/Red/Sea 8015171-593, Trim: Soie Cord Petite in Sapphire T8012525-55



Drapery: English Leopard in Nougat 8015170-114, Trim: Soie Fret in Daffodil T8012523-414; Furniture: Renard Chair BR-2020. Chair in Savonnerie Velvet in Earth BR-89305-648; Pillows: (Left to Right) Sarada Texture in Blue/Tan 8015176-524, Trim: Brosse De Laine in Ash T8015508-511; Aralam Print in Flint/Rye 8015175-116, Trim: Soie Cord Petite in Daffodil T8012525-4; Kaliveli Woven in Pumice 8015173-11, Trim: T8012525-106



Coringa Embroidery in Linen 8015169-16  
Also available in Aubergine (610)



**Brunschwig & Fils®**

BRUNSCHWIG.COM

Coringa Embroidery • Linen 8015169-16 Also available in Aubergine (610)