



# THOM FILICIA

FOR KRAVET COLLECTIONS





Hi, I'm Thom Filicia and I'm thrilled to introduce my second collection of fabrics for Kravet. My goal as a designer is to create environments that are both accessible and exceptional – spaces that speak to the way we live today.

The textures and patterns in my new collection provide a great resource for creating spaces that feel personalized while retaining a sense of relaxed sophistication and easy style. With the addition of trimmings and drapery hardware, this collection can provide you with stylish accents or a totally pulled together look.

I have always believed that great design should elevate one's environment, speak to an individual or family's personality and provide a backdrop for all of the special moments in one's life. It is with that inspiration that I've created this collection and I hope that you enjoy it as much as I do!



Wallpaper - WSP6359.WT.0; Drapery Fabric - Sandy Pond in Smoke (11), Trim - Camillus in Linen T30656-106; Sectional - Highbridge B614, Fabric - Meachem in Stone 32797-11; Back Pillow - Tousey in Quarry (424), Trim - Broadfield in Chartreuse T30655-3; Front Pillow - Edtim in Linen 32793-16, Trim - Marcel in Smoke T30657-311; Chair - Van Buren B611, Fabric - Edtim in Linen 32793-16, Panel Fabric - Lamson in Graphite 32792-21, Trim - Broadfield in Smoke T30655-818; Pillow - Maltbie in Urban 32794-319; Hammered Antique Silver Lamp on Black Marble Base AFS2685; Tables - Brewerton Lamp Table with Painted Mirror OT720L-PM; Brewerton Square Cocktail Table with Painted Mirror OT720S-PM; Carpet - Sari in Jewel

Drapery Fabric - Stinard in Chartreuse 32799-311, Edge Fabric - Edtim in Chartreuse 32793-4, Trim - Marcel in Chartreuse T30657-319; Hardware - HDW20322-48, HDW20310-48, HDW20333-48, HDW20337-48; Table - Taunton Round Pedestal OT750S-60; Chairs - Buckley Side Chair B616S, Buckley Arm Chair B616A, Fabric - Pennock in Lizard (4), Back Fabric - Stinard in Chartreuse 32799-311; Cabinet - Windsor Buffet with Painted Mirror OT760-PM; Large Clear Glass Lamp AFS2686, Large Painted Parchment Shade in Grey AFS2727; Side Table - AFS1234 Stand; Carpet - Lavish Leaves in Steel

“My philosophy for design and living has a lot to do with the layering of colors, textures and patterns, which allows a space to feel collected and pulled together.”



Buckley Arm and Side Chairs B616A/B616S



Taunton Round Pedestal Table OT750S-60



Windsor Buffet with Painted Mirror OT760-PM



Van Buren Chair B611



Broadfield Floor Mirror with Painted Mirror B7611-PM



Brewerton Square Cocktail Table with Painted Mirror OT720S-PM



Highbridge Sectional B614LAS and B614RAH

Wallpaper - WSP6359.WT0; Hardware - HDW20331-106, HDW20308-106, HDW20336-106, HDW20339-106; Drapery Fabric - Sandy Pond in Smoke (11), Trim - Camillus in Linen T30656-106; Sectional - Highbridge B614, Fabric - Meachem in Stone 32797-11; Side Pillows - Tousey in Quarry (424), Trim - Broadfield in Chartreuse T30655-3; Chair - Van Buren B611, Fabric - Edtim in Linen 32793-16, Panel Fabric - Lamson in Graphite 32792-21, Trim - Broadfield in Smoke T30655-818; Pillow - Maltbie in Urban 32794-319; Hammered Antique Silver Lamp on Black Marble Base AFS2685; Tables - Brewerton Lamp Table with Painted Mirror OT720L-PM; Brewerton Square Cocktail Table with Painted Mirror OT720S-PM; Broadfield Floor Mirror with Painted Mirror B7611-PM; Carpet - Sari in Jewel



“Textiles are a great way to define the sensibility of a space. You can inject a lot of personality and lifestyle into the home through the layering of textiles.”

Wallpaper - WSP6359.WT0; Drapery Fabric - Sandy Pond in Smoke (11); Hardware - HDW20331-106, HDW20308-106, HDW20336-106, HDW20339-106



Croly in Oatmeal  
30966-1



West Ave in Steel  
32831-11



Stinard in Stone  
32799-1611



Broadfield in Cream  
T30655-1



Broadfield in Oatmeal  
T30655-16



Broadfield in Moonlight  
T30655-11



Muller in Nickel  
32819-11



Split Rock in Oatmeal  
32833-16



Sandy Pond in Sand (16)



Camillus in Linen  
T30656-106



Marcel in Coast T30657-5, Marcel in Smoke T30657-311, Marcel in Chartreuse T30657-319



Marcel in Coast  
T30657-5



Camillus in Coast  
T30656-515



Broadfield in Coast  
T30655-5



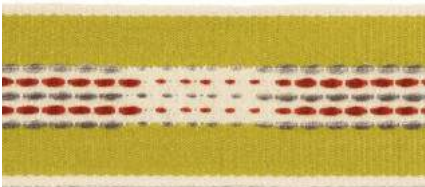
Marcel in Smoke  
T30657-311



Camillus in Smoke  
T30656-81



Broadfield in Smoke  
T30655-818



Marcel in Chartreuse  
T30657-319



Camillus in Grass  
T30656-316



Broadfield in Chartreuse  
T30655-3





Everson in Chartreuse (311)



Pennock in Lizard (4)



Edtim in Chartreuse  
32793-4



Conifer in Modern  
32798-311



Maltbie in Capri  
32794-530



Fobes in Capri  
32836-530



Kimmel in Spa (415)



Edtim in Linen  
32793-16



Stinard in Spa  
32799-635



Sandy Pond in Spa (15)



Boyden in Aqua  
32657-135



Pennock in Lagoon (135)



Meachem in Spa  
32797-3



Ithica in River (540)



Henninger in Coast  
32795-5



Gere in River (5)



Everson in Coast (515)



Rigi in Ink  
32790-516



Fiscoe in Bay  
32824-5



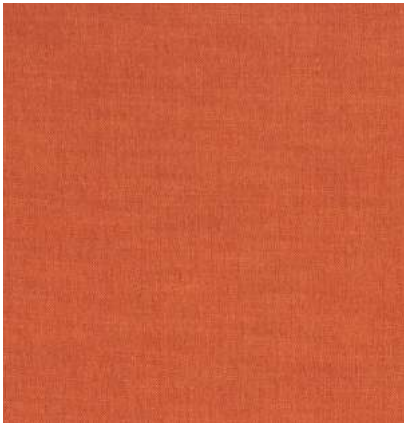
Tousey in Quarry (424)



Fobes in Tango  
32836-1211



Boyden in Coral  
32657-19



Edtim in Coral  
32793-12



Kimmel in Mineral (511)



Molloy in Urban  
32806-311



Broadfield in Spice  
T30655-24



Camillus in Cream  
T30656-16



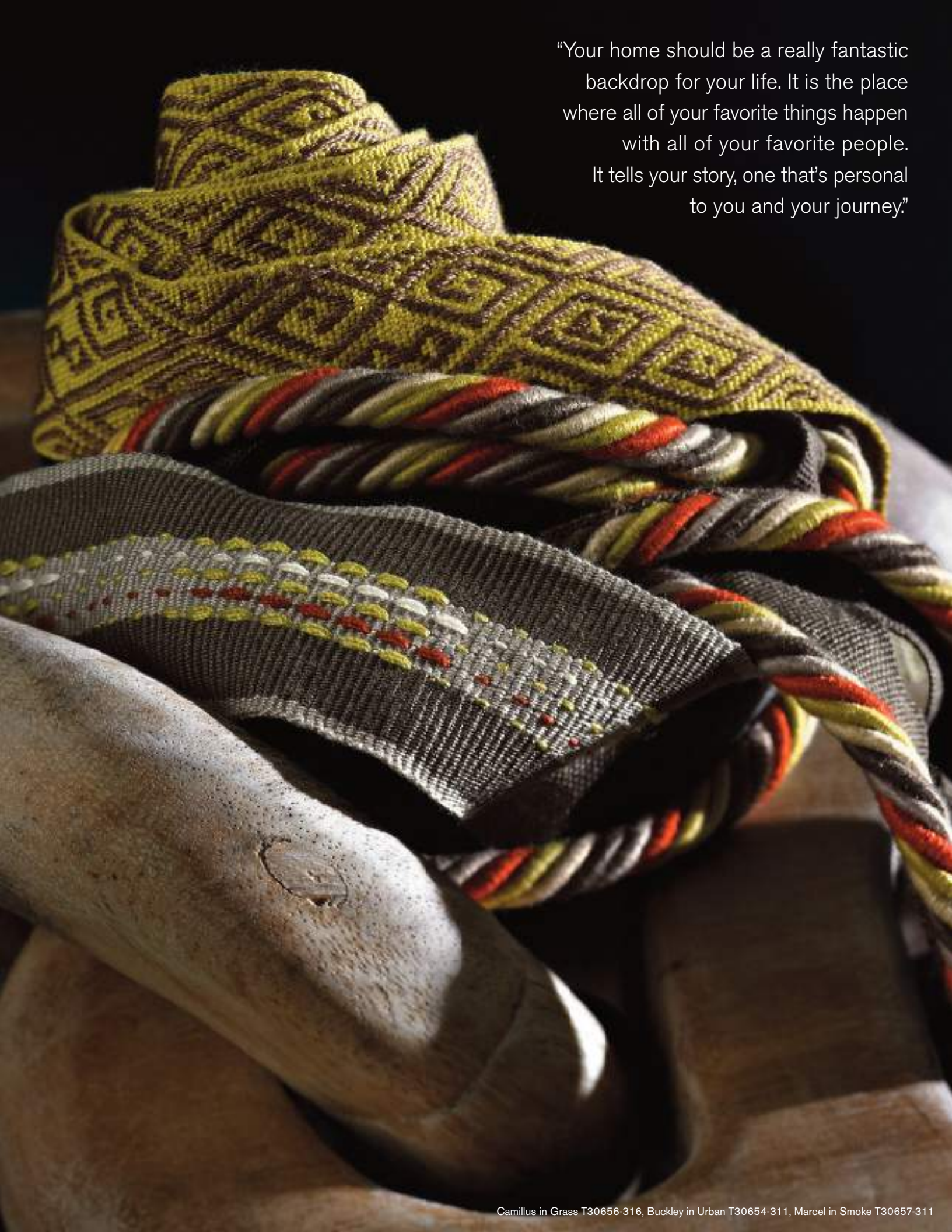
Buckley in Urban  
T30654-311



Camillus in Oatmeal  
T30656-416



Broadfield in Stone  
T30655-616



“Your home should be a really fantastic backdrop for your life. It is the place where all of your favorite things happen with all of your favorite people. It tells your story, one that’s personal to you and your journey.”

For the complete Thom Filicia lifestyle, please visit:  
[kravet.com/thomfilicia](http://kravet.com/thomfilicia)

[inspired.kravet](http://inspired.kravet)



kravetcollections® 225 Central Avenue South Bethpage New York 11714  
800 645 9068 Canada 800 535 3258 UK +44 (0) 1202 266 700 [kravet.com](http://kravet.com)